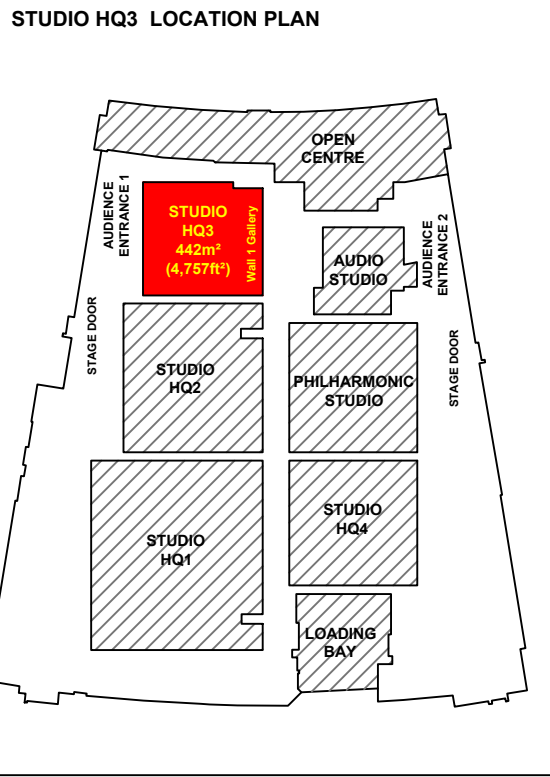


# MEDIA CITY

## HQ3 Studio Plan

### Hoist Layout



- Measurements**
- STUDIO FLOOR GRID MADE UP OF 600mm SQUARES
  - STUDIO WALL 2 TO WALL 4: 23.072m (75.7ft)
  - STUDIO WALL 2 TO WALL 4 WITHOUT FIRELANE: 21.01m (68.93ft)
  - STUDIO WALL 1 TO WALL 3: 18.298m (60ft)
  - STUDIO WALL 1 TO WALL 3 WITHOUT FIRELANE: 16.22m (53.21ft)
  - STUDIO SPACE: 422.17sq m (4,757 sq ft)
  - STUDIO SPACE WITHOUT FIRELANE: 340.78m (3667.76ft)
  - IMPOSED LOAD 12kN per sq m
  - HEIGHT TO UNDERSIDE OF GANTRY IS: 7.36m
  - HEIGHT TO GANTRY UPPER HANDRAIL IS: 8.44m
  - HEIGHT TO UNDERSIDE OF GRID IS: 11.5m
  - HEIGHT TO OUTER CYC TRACK IS: 6m
  - HEIGHT TO MIDDLE CYC TRACK IS: 6m
  - HEIGHT TO INNER CYC TRACK IS: 9m
  - MAXIMUM HEIGHT OF SCENERY HOOKS IS: approx 10m
  - MAXIMUM HEIGHT OF LIGHTING BARS IS: 10m
  - SIZE OF LOAD IN DOOR: 3m Wide , 5.2m High

- Hoists**
- NUMBER OF LIGHTING HOISTS:  
57 AT 2.4m, 4 AT 2m, 4 AT 0.48m
  - 12 SCENERY TRACKS WITH 3 HOISTS IN EACH TRACK
  - NUMBER OF SCENIC HOISTS WITH SWL 180KG: 36

- Mains**
- GROUND LEVEL MAINS:  
2x 125A 3φ  
12x 32A 1φ (FUSED AT 25A)  
24x 16A 1φ  
48x 3Kw SINEWAVE DIMMERS
  - 2x 63A 3φ

- GANTRY LEVEL MAINS:  
2x 63A 3φ  
8x 32A 1φ (FUSED AT 25A)  
16x 3Kw SINEWAVE DIMMERS

- LIGHTING HOIST MAINS:  
65x 32A 1φ (FUSED AT 25A) WITH A 16A 1φ PIGGY BACKED  
296x 3Kw SINEWAVE DIMMERS

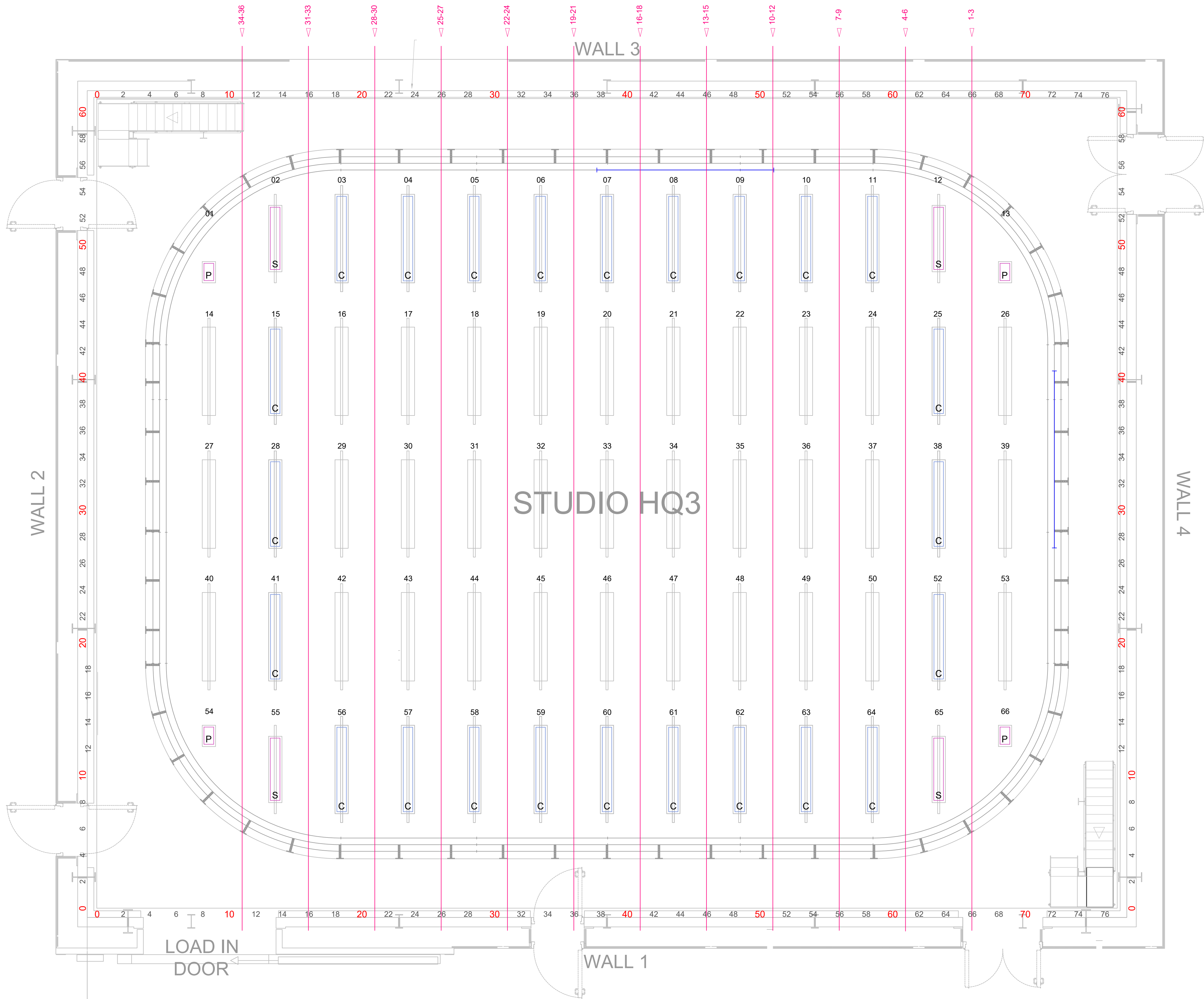
- GRID MAINS:  
2x 32A 3φ (FUSED AT 25A)  
4x 3Kw SINEWAVE DIMMERS

- SWL**
- STUDIO FLOOR 12kN/m<sup>2</sup>
  - GANTRY FLOOR 500kg/m<sup>2</sup>
  - GANTRY HANDRAIL CENTRE POINT 100kg, THIRD POINTS 120kg
  - GRID 150kg/m<sup>2</sup>

- KEY:**
- Fire Lane**
  - Water Tap**
  - Fire Alarm Beacon**
  - Fire Alarm Sounder**
  - Facility Panel**

- 3 Phase Mains Outlets**

|  |  |
|--|--|
| PRODUCTION:  |  |
| DIRECTOR:  |  |
| DESIGNER:  |  |
| DRAWN BY:  |  |
| PRODUCTION DATE:   |  |
| Useful Telephone Numbers   | SCALE:<br>A1 @<br>ISO_A1_(841.00_X_594.00_MM)<br>Version: 2<br>Drafted 10/06/2026, |
| 24hr Control Room 0161 855 6400<br>dock10 office 0161 886 5111<br>MCR 0161 886 5151<br>Unauthorised copying or<br>distribution is prohibited |  |



Galleries (Level 1) - Scenery Runway (Ground Level)

N.B. MEASUREMENTS ARE INCLUDED AS A GUIDE.  
PLEASE DOUBLE CHECK ON SITE IF CRITICAL TO  
PRODUCTION.  
ADEQUATE ARRANGEMENTS FOR ACCESS AND  
EGRESS TO AND FROM THE STUDIO SHOULD BE  
ALLOWED IN LINE WITH REGULATIONS